

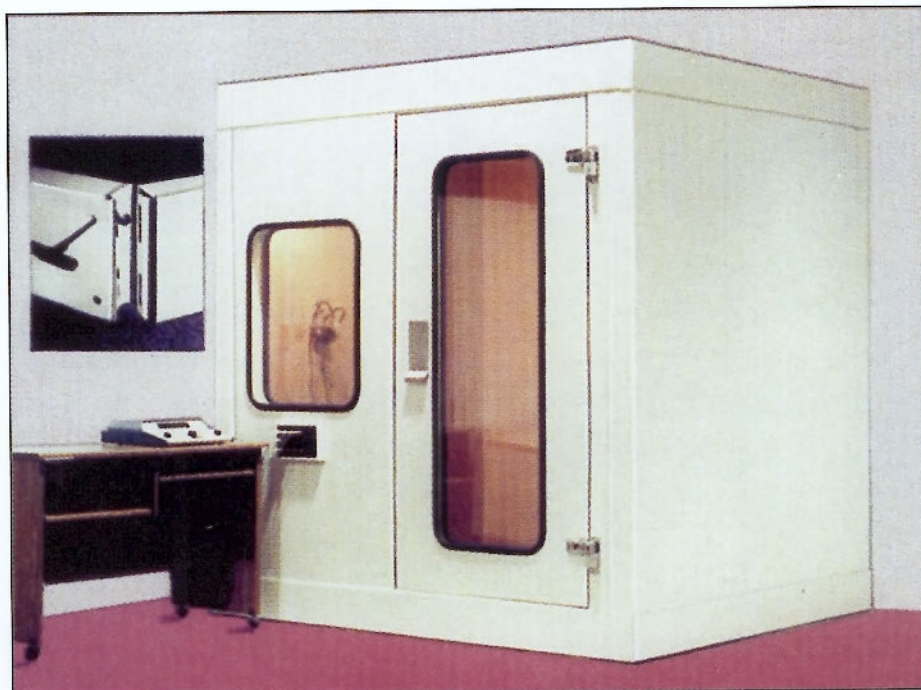
# ECKEL AUDIOMETRIC ROOMS

## OFFER OUTSTANDING NOISE REDUCTION

### CL SERIES Panel System

#### QUALITY ENGINEERED SOUND ISOLATION ROOMS FOR

**AUDIOLOGISTS ■ DOCTORS ■ HEARING AID SPECIALISTS ■ CLINICS**



*Innovative audiometric rooms and suites for all audiological measurements and research, combine excellent performance and versatile design. Choice of eight standard models of 4" thick single-wall Eckel Audiometric Rooms are offered to meet most needs.*

#### **EXCELLENT ACOUSTIC CHARACTERISTICS**

Wall, ceiling and floor panels provide outstanding noise reduction. Panels are connected and secured to each other using a special cam locking panel design. The acoustic door, which incorporates a continuous magnetic seal, has an acoustic attenuation comparable to that of the walls.

**COMPLETELY ISOLATED** Structurally borne noise is effectively isolated through the independent floor by rubber-in-shear mounts.

**VERSATILE** The standard, built-in jack panel adapts to all audiometers. Doctors, audiologists and hearing aid dispensers not only can conduct a full range of diagnostic measurements necessary to properly fit a person with a

hearing aid, but also can perform all audiological assessments.

**EXCELLENT VISIBILITY** A 24" x 30" built-in double-glazed, 1/4" acoustic glass window assures the integrity of the room's performance and permits visual observation and monitoring, and also prevents any feeling of claustrophobia.

**COMFORTABLE TO USE** The spacious interior has an independent silenced power ventilation system with noise level below the binaural threshold of hearing. It supplies at least 12 air changes an hour, keeping the room fresh and pleasant.

**IN-PLACE LIGHTING** 2-bulb wall-mounted fixture provides good interior illumination.

**ATTRACTIVE** The interior and exterior of the rooms are finished with a durable paint to assure a handsome, long-lasting appearance. Choice of light beige, warm grey or powder blue.

#### **NOISE REDUCTION**

Hz	dB
125	19
250	30
500	39
1000	50
2000	58
4000	60

#### **STANDARD FEATURES**

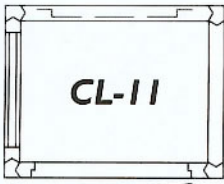
- 34 1/2" x 73 3/4" clear opening door
- 24" x 30" double-glazed 1/4" acoustic window set in rubber gasket
- Jack panel
- Ventilation
- Lighting
- Carpeting
- Window in door option
- Easy to install, take down and move
- No caulking - acoustic seal between panels is accomplished with Acoustical Rubber Seals.
- Universal door system LHH or RHH
- Electricity: plug in and use
- Shipped in skids anywhere in North America.

*When ordering, specify door swing (left hand or right hand). A sketch of the proposed arrangement of examination area will help ensure satisfaction.*

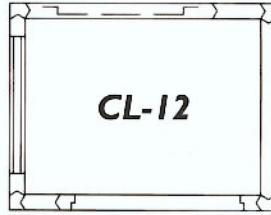
Box 776 15 Allison Ave. Morrisburg ON K0C 1X0  
Tel: 613-543-2967 800-563-3574 Fax: 613-543-4173  
Web site: [www.eckel.ca](http://www.eckel.ca) E-mail: [eckel@eckel.ca](mailto:eckel@eckel.ca)

**ECKEL**  
INDUSTRIES OF CANADA LIMITED

# LOOK AT THESE PLANS AND CHOOSE ONE FOR YOUR OFFICE



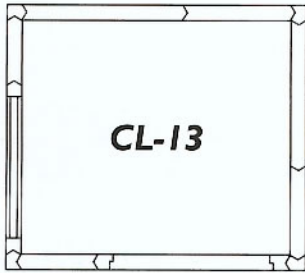
	W.	D.	H.
I.D.	1118 mm	838 mm	1981 mm
O.D.	1321 mm	1041 mm	2362 mm
I.D.	3' 8"	2' 9"	6' 6"
O.D.	4' 4"	3' 5"	7' 9"



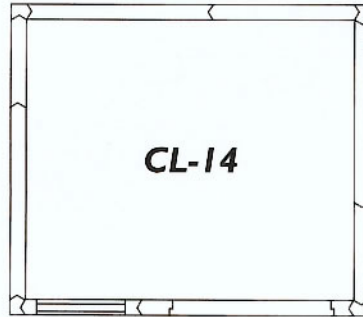
	W.	D.	H.
I.D.	1397 mm	1118 mm	1981 mm
O.D.	1600 mm	1321 mm	2362 mm
I.D.	4' 7"	3' 8"	6' 6"
O.D.	5' 3"	4' 4"	7' 9"



	W.	D.	H.
I.D.	1956 mm	1118 mm	1981 mm
O.D.	2159 mm	1321 mm	2362 mm
I.D.	6' 5"	3' 8"	6' 6"
O.D.	7' 1"	4' 4"	7' 9"



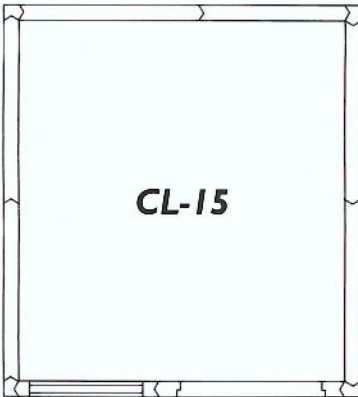
	W.	D.	H.
I.D.	1676 mm	1397 mm	1981 mm
O.D.	1880 mm	1600 mm	2362 mm
I.D.	5' 6"	4' 7"	6' 6"
O.D.	6' 2"	5' 3"	7' 9"



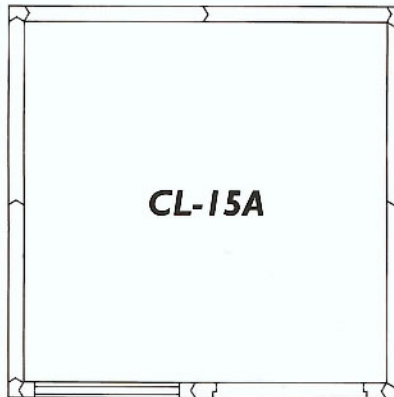
	W.	D.	H.
I.D.	1956 mm	1676 mm	1981 mm
O.D.	2150 mm	1880 mm	2362 mm
I.D.	6' 5"	5' 6"	6' 6"
O.D.	7' 1"	6' 2"	7' 9"



	W.	D.	H.
I.D.	1956 mm	1956 mm	1981 mm
O.D.	2159 mm	2159 mm	2362 mm
I.D.	6' 5"	6' 5"	6' 6"
O.D.	7' 1"	7' 1"	7' 9"



	W.	D.	H.
I.D.	1956 mm	2235 mm	1981 mm
O.D.	2159 mm	2438 mm	2362 mm
I.D.	6' 5"	7' 4"	6' 6"
O.D.	7' 1"	8' 0"	7' 9"

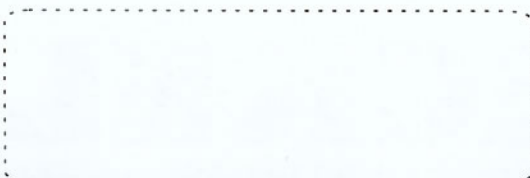


	W.	D.	H.
I.D.	2235 mm	2235 mm	1981 mm
O.D.	2438 mm	2438 mm	2362 mm
I.D.	7' 4"	7' 4"	6' 6"
O.D.	8' 0"	8' 0"	7' 9"

Outside dimension of rooms includes the silencer.

On models CL-11 and CL-12, static silencer is in rear wall.

DEALER / DISTRIBUTOR



# ECKEL

INDUSTRIES OF CANADA LIMITED

Box 776 15 Allison Ave. Morrisburg ON K0C 1X0  
 Tel: 613-543-2967 800-563-3574 Fax: 613-543-4173  
 Web site: [www.eckel.ca](http://www.eckel.ca) E-mail: [eckel@eckel.ca](mailto:eckel@eckel.ca)